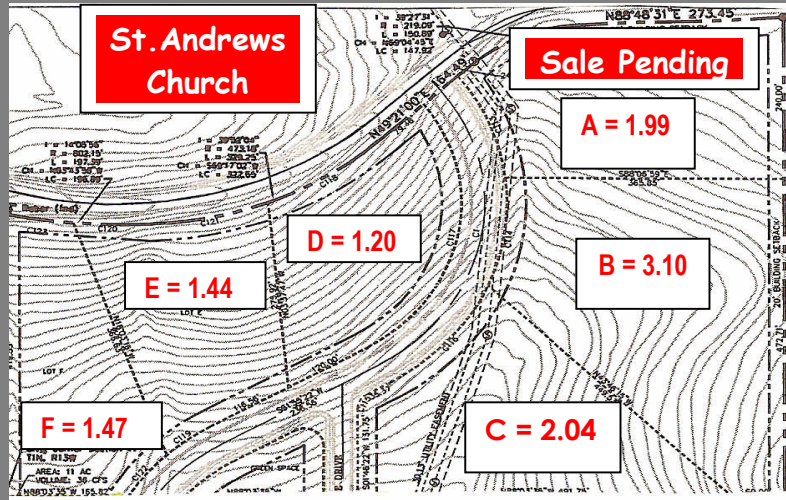


# FOR SALE

# Kanis Village Office Lots

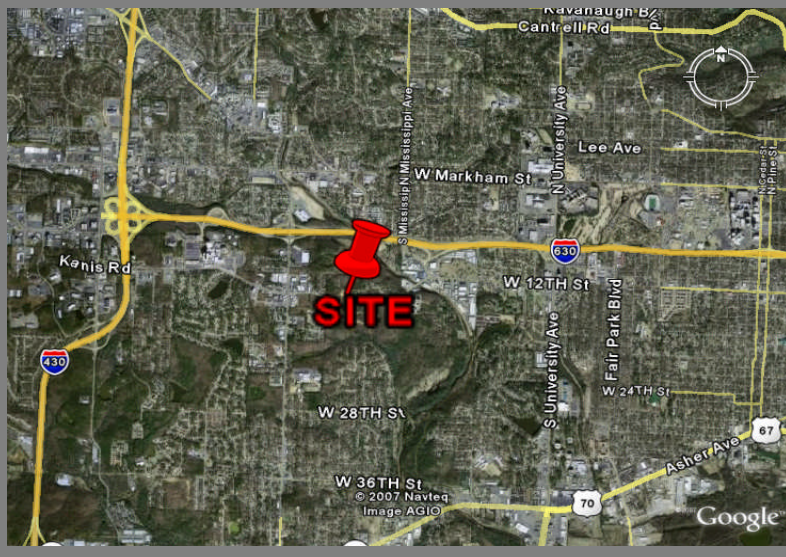


- \$3.75 PSF
- 1.5 Acres +/- (12 Total)
- East of John Barrow Rd.

**Perfect for a Medical Office Park**

- Near 5 Major Hospitals!
- Traffic Count = 24,000 Kanis/Barrow
- Current Zoning "R-2"
- Land Use Calls for Transition

**Backs up to NEW 265 Lot Kanis Village Development**



**Contact:**  
**Randall Moore, CCIM**

Terry Moore  
 & Associates, Inc.

**223-3800**